



*INTERNATIONAL TRADE COMMISSION
MINISTRY OF ECONOMIC AFFAIRS*

8F., No.317, Songjiang Rd., Jhongshan
District, Taipei City 104070,
Taiwan(R.O.C.)

TEL: 886-2- 2506-6670, ext. 511
FAX: 886-2- 25029557
e-mail : itc@moea.gov.tw

MOEAITC-ID-11100008510
Date: May 10, 2022

RE: Antidumping Case on Float Glass, in Sheets

COMPANY NAME:

ADDRESS:

TELEPHONE NUMBER:

FACSIMILE NUMBER:

E-mail:

To whom it may concern:

In compliance with the decision of the Ministry of Finance (MOF) to initiate the investigation of the antidumping case on Float Glass, in Sheets from Malaysia, Indonesia and Thailand, the International Trade Commission (ITC) of the Ministry of Economic Affairs (MOEA) is hereby sending you this summarized English inquiry along with the original copy of our official letter in Chinese.

Background

Taiwan Glass Industries Association on behalf of the domestic industry filed a petition with the MOF to impose antidumping duties on Float Glass, in Sheets from Malaysia, Indonesia and Thailand. The MOF determined to initiate the investigation and transferred this case to the MOEA on May 6, 2022 for preliminary injury investigation. The ITC, in accordance with Article 11 and Article 19 of the Regulations Governing the Implementation of the Imposition of Countervailing and

Anti-Dumping Duties, therefore instituted the preliminary injury investigation on May 10, 2022. A copy of the flowchart of the investigation procedure is enclosed. The Regulations Governing the Implementation of the Imposition of Countervailing and Anti-Dumping Duties can be found on the website:

<http://law.moj.gov.tw/Eng/LawClass/LawAll.aspx?PCode=G0350034&programid=256&pagestyle=2>

Description of subject product:

1. Product concerned: float glass, in sheets, including both clear float glass and tinted float glass.
2. Scope of Product concerned:
 - (1) Flat glass manufactured through the float process;
 - (2) Thickness exceeding 1.1mm, and less than or equal to 19mm;
 - (3) All widths and lengths;
 - (4) Float glass, in sheets, non-wired, not having "an absorbent, reflecting or non-reflecting layer", but not otherwise worked
3. Reference CCC Codes: 70052990107, 70052100006.

Requesting Certain Information

Please provide us with the following details, and their public version for public reading, of Float Glass, in Sheets for the years 2017 through 2021 on an annual basis and for the first quarters of 2021 and 2022:

1. Production
2. Utilization of capacity
3. Inventory
4. Volume exported to Taiwan, with both FOB and CIF prices
5. Volume exported to third countries, with FOB prices
6. Home market shipments
7. Data projected concerning the above items for the year of 2022.

Furthermore, please provide us with some brief introductory materials and annual reports of your company in English, which include information concerning company structure, manufacturing process, and

product types.

In order to make preliminary injury determination, please return the required data and materials to us no later than May 25, 2022, by fax, airmail, or e-mail. Although failing to submit the required data on time in the preliminary injury investigation phase shall not be prejudicial to the definitive injury determination, your cooperation would be advantageous to your company and is therefore strongly encouraged.

All known interested parties will be kept informed about the progress of the investigation. At the same time, the ITC will keep updating the investigation proceeding at its website:

https://www.moeaitc.gov.tw/ITC/english/case/wfrmRelatedInfo.aspx?menu_id=144, or “Related Information by Case” under “Investigation Cases” at the front page of our website.

If you have any questions about this case, please contact the following correspondents.

Ms. Chou (Ming-Hui Chou)

Tel: 886-2-2506-6670 ext. 511

Ms. Lin (Su-Chuan Lin)

Tel: 886-2-2506-6670 ext. 503

Sincerely yours,



Pi-Cheng Liu

Director, Investigation Division

Enclosure

Cc:

Ministry of Foreign Affairs

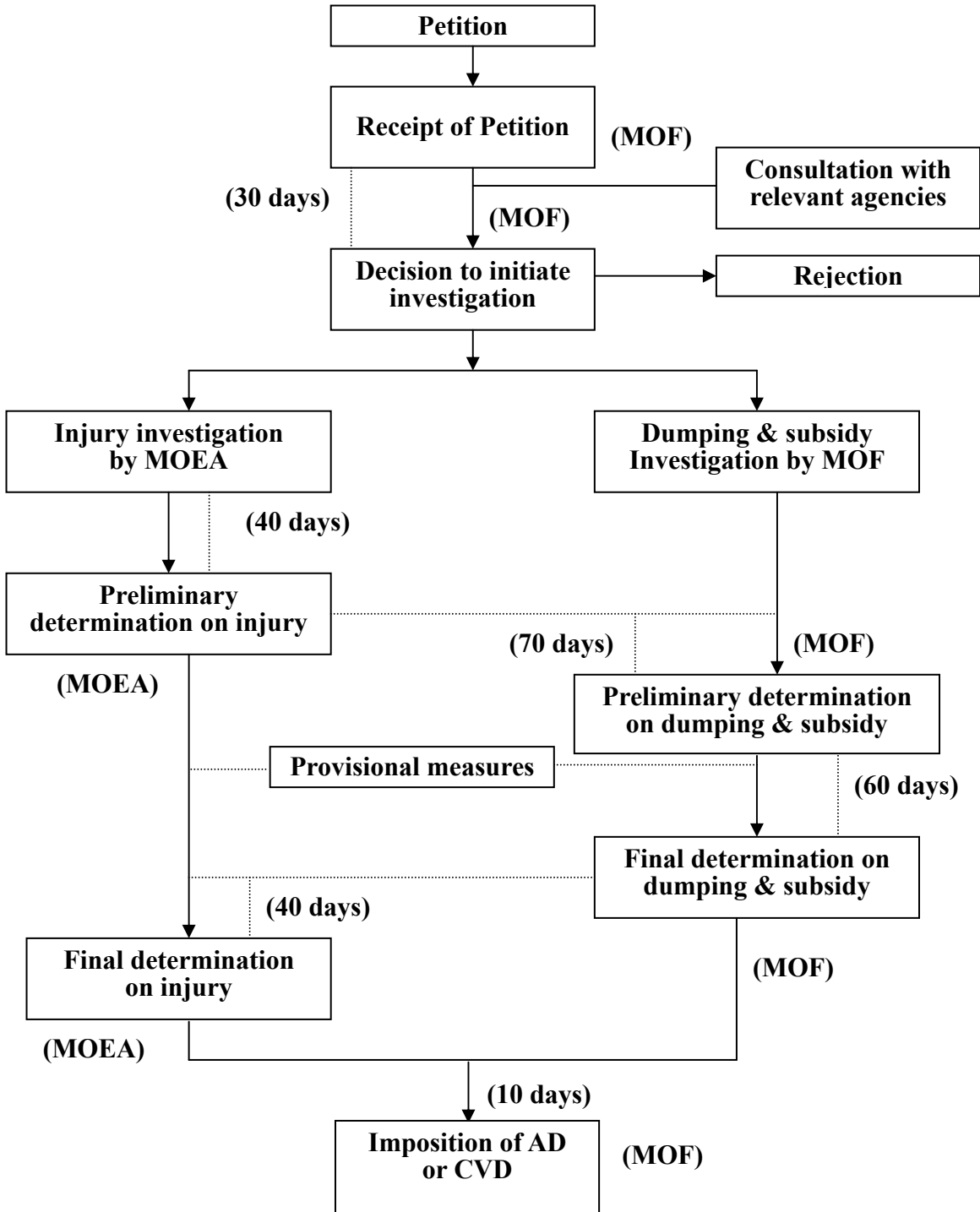
Permanent Mission of the Separate Customs Territory of Taiwan,

Penghu, Kinmen and Matsu to the World Trade Organization

Malaysian Friendship and Trade Centre, Taipei

Economic Division, Taipei Economic and Cultural Office in Malaysia
Indonesian Economic and Trade Office to Taipei
Economic Division, Taipei Economic and Trade Office, Jakarta,
Indonesia
Thailand Trade and Economic Office
Economic Division, Taipei Economic and Cultural Office in Thailand

ANTIDUMPING AND COUNTERVAILING DUTY SYSTEM



* Days between events shown above may be extended up to one half longer, if necessary.